



MADE IN CADDORE



# The heart of nature

---

Tratti eleganti e femminili, materiali di altissima qualità, lavorazione artigianale: il metallo rivela i toni caldi della natura, gli acetati richiamano le colorazioni legate all'ambiente montano e ai suoi elementi.

Le linee pulite e definite sembrano scolpite nella pietra.  
I nomi delle montature sono un omaggio a ciò che ci circonda.

---

*Elegant, feminine shapes, ultra-high-quality materials, artisan craftsmanship – metal that unleashes the warm tones of mother nature, acetates that reflect the colors of the mountains and their elements.*

*The clean, well-defined lines seem sculpted in stone.  
The names given to the frames pay tribute to everything the eye can see.*

---



# Peralba



c1



c2



c3



c4



○ 52   ✂ 20   └ 140

# Marmolada



c1



c2



c3



c4



○ 51   ✂ 18   └ 135





# Tofana



c1



c2



c3



○ 53    ✂ 23    ↗ 135

# Aiarnola



c1



c2



c3



c4



○ 53    ✂ 19    ↗ 135





# Gera



c1



c2



c3



c4



○ 51    ✕ 20    135

# Vodo



c1



c2



c3



c4



○ 51    ✕ 18    135







# Cibiana



c1



c2



c3



c4



○ 49   ✂ 21   └ 135

# Tulipano



c1



c2



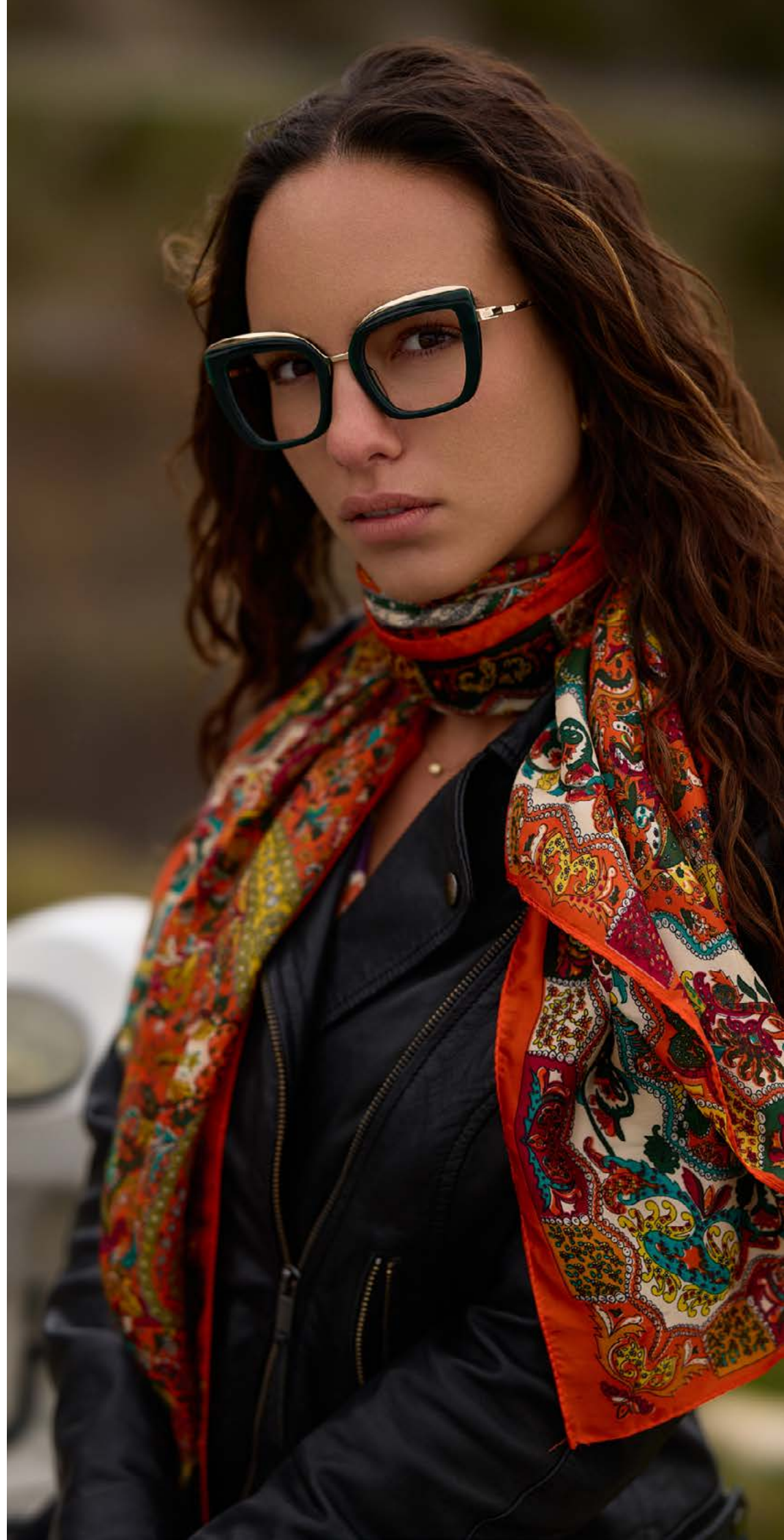
c3



c4



18   ○ 53   ✂ 16   └ 135



# Pieve



c1



c2



c3



c4



○ 49   ✕ 19   └ 135

# Vigo



c1



c2



c3



c4



○ 51   ✕ 15   └ 135







## Valle



c1



c2



c3



c4



○ 53    ✂ 16    ↗ 135

## Padola



c1



c2



c3



c4



○ 53    ✂ 16    ↗ 135



# Selva



c1



c2



c3



c4



○ 53    7 16    135

# Gemma



c1



c2



○ 54    7 18    135



# Margherita



c1



c3



c4



○ 50    ✕ 17    / 135

# Genziana



c1



c2



c3



c4



○ 51    ✕ 15    / 135





# Anemone



c1



c2



c3



○ 51    ✕ 17    135

# Coccinella



c1



c2



c3



○ 50    ✕ 22    135





## Bocciolo



c2



c3



○ 53    ✕ 18    ↗ 135

## Fiocco



c1



c2



c3



c4



○ 51    ✕ 18    ↗ 135

35



# Valanga



c4



c7



c8



c9



c11



c12



○ 50    ✕ 23    / 135



# Scintilla



c1



c3



c5



c6



53 17 135





# Cristallo



c1



c2



c3



c4



50 21 140

# Civetta



c1



c2



c3



40

52 16 140





# Vinigo



c1



c2



c3



○ 52   ✕ 22   140

# Danta



c1



c2



c3



c4



40

○ 50   ✕ 21   140





## Gelsomino



c1



c3



○ 54   ✕ 21   ↗ 145

## Ginestra



c1



c2



c3



c4



51

○ 52   ✕ 17   ↗ 145



# Fiamma



# Maestrale



54



# The power of nature

---

Tratto distintivo di tutti gli occhiali MIC è il dettaglio in metallo sull'asta in corrispondenza della cerniera: un elemento iconico che, nella sua essenzialità, richiama il profilo delle Dolomiti. Design, qualità, artigianalità.

---

*The signature hallmark of all MIC eyewear is the metal detail on the sidepiece near the hinge: an iconic symbol that, in its elemental lack of pretense, echoes the outlines of the mountain. Design, quality, artisan craftsmanship.*

---





## Pelmo



c1



c2



c3



c4



○ 50    ✂ 24    ↗ 140

## Sorapis



c1



c2



c3



○ 57    ✂ 14    ↗ 140





## Pozzale



c1



c2



c3



c4



○ 53    ✂ 18    ↗ 140

## Lozzo



c1



c2



c3



c4



○ 55    ✂ 14    ↗ 140





## Venas



c1



c2



c3



c4



○ 53   ✕ 17   140

## Torrente



c1



c3



○ 48   ✕ 21   140



# Nebbiù



c1



c2



c3



○ 53    ✕ 18    135

---

# Bosco



c1



c3



c4



68

○ 51    ✕ 20    135





## Larice



c1



c2



c3



c4



○ 54    ✕ 17    ↗ 140

## Eolo



c1



c2



c3



71

○ 54    ✕ 18    ↗ 140





# Abete



c2



c3



○ 52    ✕ 17    140

---

# Giacinto



c1



c2



c3



c4



○ 52    ✕ 17    140

75

# Trifoglio



c1



c2



c3



○ 50    ✕ 21    ↗ 140

# Mughetto



c2



c3



c4



○ 54    ✕ 17    ↗ 140





# Crepuscolo



c1



c2



c3



c4



○ 50    ✕ 23    / 140





## Antelao



c1



c2



c3



○ 53    ✕ 22    ↗ 140

## Sorapis



c2



c3

○ 57    ✕ 14    ↗ 140



# Auronzo



c1



c2



c3



○ 53    ✕ 20    ↵ 140

# Dosoledo



c1



c2



c3



○ 62    ✕ 16    ↵ 125





# Tai



c1



c2



c3



○ 55    ✕ 17    ↗ 140

# Laggio



c1



c2



c3



c4



○ 55    ✕ 18    ↗ 140







## Botton D'Oro



c1



c2



c3



○ 127   ✂ 00   ↗ 145

## Aquila



c1



c2



c3



○ 52   ✂ 21   ↗ 145

# Ginepro



c1a



c1b



c2



c3



○ 57    ✕ 16    140

# Tuono



c1



c2



c3

○ 61    ✕ 12    135





# Iberis



c1



c2



c3



○ 57    ✕ 15    └ 140

---

# Dirupo



c1



c2



c3

○ 60    ✕ 13    └ 135



Cartelli vetrina - *Window panels*



CVM\_238



CVM\_239



CVM\_240



CVM\_241



CVM\_243



CVM\_244

Cartelli vetrina - *Window panels*



CVM\_245



CVM\_246



CVM\_247



CVM\_248



CVM\_251



CVM\_252

Cartelli vetrina - *Window panels*



CVM\_253



CVM\_254



CVM\_261



CVM\_263



CVM\_256



CVM\_257



CVM\_264



CVM\_265



CVM\_259



CVM\_260



CVM\_266



CVM\_267

Cartelli vetrina - *Window panels*



CVM\_268



CVM\_269



CVM\_270



CVM\_271



CVM\_272



CVM\_273

Cartelli vetrina - *Window panels*



CVM\_274



CVM\_275



CVM\_276



CVM\_277



CVM\_278

Cartelli vetrina - Window panels



CVM\_233



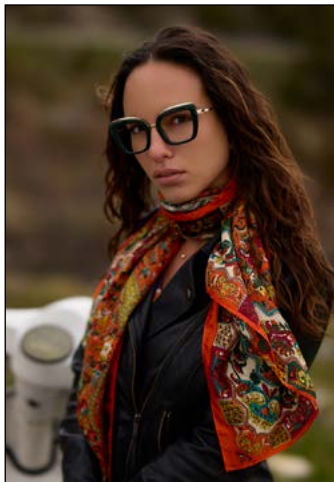
CVM\_227



CVM\_220



CVM\_229



CVM\_222



CVM\_230



CVM\_234



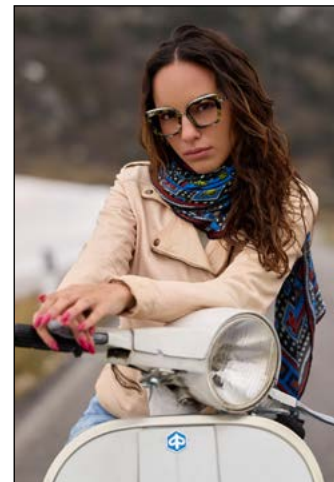
CVM\_225



CVM\_237



CVM\_228



CVM\_224



CVM\_236

Cartelli vetrina - Window panels

Cartelli vetrina - Window panels



CVM\_223



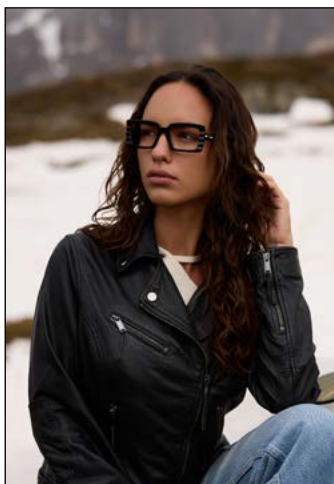
CVM\_232



CVM\_231



CVM\_226



CVM\_219



CVM\_235

Cartelli vetrina - Window panels



CVM\_168



CVM\_195

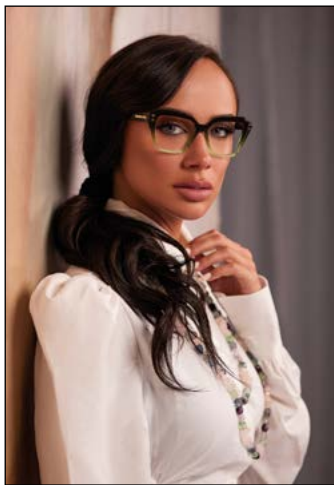


CVM\_084



CVM\_212

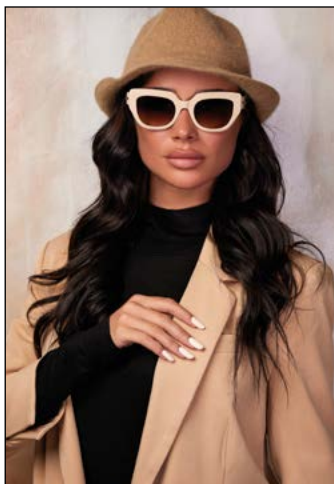
Cartelli vetrina - Window panels



CVM\_165



CVM\_179



CVM\_183



CVM\_200



CVM\_187



CVM\_169



CVM\_157



CVM\_132



CVM\_217



CVM\_103



CVM\_175



CVM\_155

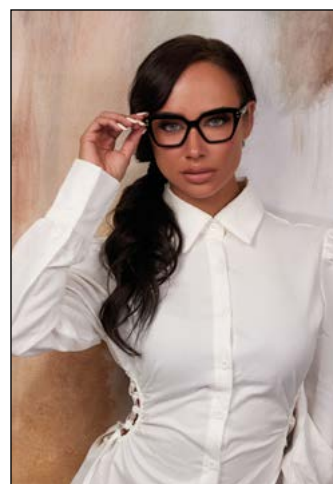
Cartelli vetrina - *Window panels*



CVM\_177



CVM\_213



CVM\_167



CVM\_198



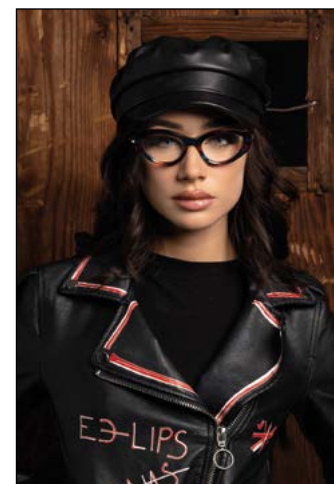
CVM\_202



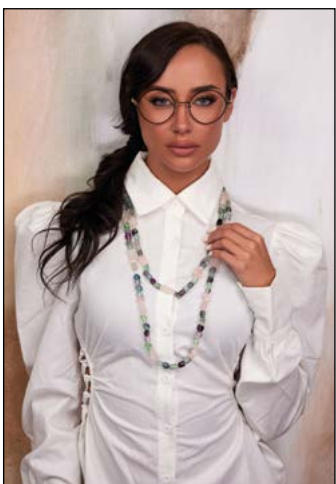
CVM\_180



CVM\_079



CVM\_105



CVM\_214



CVM\_066



CVM\_161



CVM\_190



Cartelli vetrina - *Window panels*



CVM\_156



CVM\_158



CVM\_153



CVM\_154

Espositore - *Display*



Astuccio - *Case*

Placchetta - *Logo display*





IMMAGINE 98

tel. +39 0435 501137  
info@immagine98.it  
www.mic-madeincadore.it



@madeincadore



micmadeincadore