







# The heart of nature

---

Tratti eleganti e femminili, materiali di altissima qualità, lavorazione artigianale: il metallo rivela i toni caldi della natura, gli acetati richiamano le colorazioni legate all'ambiente montano e ai suoi elementi.

Le linee pulite e definite sembrano scolpite nella pietra.  
I nomi delle montature sono un omaggio a ciò che ci circonda.

---

*Elegant, feminine shapes, ultra-high-quality materials, artisan craftsmanship – metal that unleashes the warm tones of mother nature, acetates that reflect the colors of the mountains and their elements.*

*The clean, well-defined lines seem sculpted in stone.  
The names given to the frames pay tribute to everything the eye can see.*

---





# Pieve



c1



c2



c3



c4



○ 49   ✕ 19   135

# Vigo



c1



c2



c3



c4



○ 51   ✕ 15   135











## Valle



c1



c2



c3



c4



○ 53    ✂ 16    ↗ 135

## Padola



c1



c2



c3



c4



○ 53    ✂ 16    ↗ 135







# Selva



c1



c2



c3



c4



○ 53    16    135

# Linfa



c2



c3



c4



c6



○ 54    18    135







## Tulipano



c1



c2



c3



c4



○ 53    16    135

## Stella Alpina



c1



c2



c3



○ 53    16    135







# Margherita



c1



c2



c3



c4



○ 50    ✕ 17    / 135

# Genziana



c1



c2



c3



c4



○ 51    ✕ 15    / 135







## Primavera



c1



c3



○ 52    ✕ 20    / 135

## Coccinella



c1



c2



c3



○ 50    ✕ 22    / 135







# Anemone



c1



c2



c3



○ 51    ✕ 17    135

# Fiordaliso



c1



c2



c3



○ 53    ✕ 17    135







## Bocciolo



c2



c3



○ 53    ✕ 18    / 135

## Fiocco



c1



c2



c3



c4



○ 51    ✕ 18    / 135







# Valanga



c4



c7



c8



c9



c10



c11



c12



○ 50    ✕ 23    / 135







## Fiore



c1



c2



c3



○ 54    ✕ 17    ↗ 135

## Bucaneve



c1



c3



c4



35

○ 51    ✕ 16    ↗ 135







# Scintilla



c1



c3



c5



c6



○ 53    ✂ 17    / 135











## Alba



c1



c2



c3



○ 53     $\wedge$  19     $\sim$  135

## Gemma



c1



c2



○ 54     $\wedge$  18     $\sim$  135







# Danta



c1



c2



c3



c4



○ 50   ✕ 21   └ 140







## Gelsomino



c1



c3



○ 54    ✕ 21    ↗ 145

## Ginestra



c1



c2



c3



c4



○ 52    ✕ 17    ↗ 145







# Fiamma



c1



c3



c4



○ 54    ✕ 23    140

# Maestrale



c1



c2



c3



○ 52    ✕ 19    135

52









# The power of nature

---

Tratto distintivo di tutti gli occhiali MIC è il dettaglio in metallo sull'asta in corrispondenza della cerniera: un elemento iconico che, nella sua essenzialità, richiama il profilo delle Dolomiti. Design, qualità, artigianalità.

---

*The signature hallmark of all MIC eyewear is the metal detail on the sidepiece near the hinge: an iconic symbol that, in its elemental lack of pretense, echoes the outlines of the mountain. Design, quality, artisan craftsmanship.*

---







## Lorenzago



c1



c2



c3



○ 54   ✕ 17   140

## Venas



c1



c2



c3



c4



○ 53   ✕ 17   140







# Nebbiù



c1



c2



c3



○ 53    ✕ 18    ┘ 135

# Bosco



c1



c2



c3



c4



62

○ 51    ✕ 20    ┘ 135





## Larice



c1



c2



c3



c4



54 17 140

## Eolo



c1



c2



c3



65

54 18 140







# Torrente



c1



c3



○ 48    ✕ 21    140

# Fuoco



c1



c2



c3



○ 53    ✕ 18    140











## Giacinto



c1



c2



c3



c4



○ 52    ✕ 17    ↗ 140

## Abete



c1



c2



c3



○ 52    ✕ 17    ↗ 140



# Trifoglio



c1



c2



c3



○ 50    ✕ 21    └ 140

# Mughetto



c1



c2



c3



c4



○ 54    ✕ 17    └ 140







## Crepuscolo



c1



c2



c3



c4



○ 50    ✕ 23    ↗ 140

## Dirupo



c1



c2



c3

○ 60    ✕ 13    ↗ 135



# Tai



c1



c2



c3



○ 55    ✕ 17    140

# Laggio



c1



c2



c3



c4

○ 55    ✕ 18    140











## Botton D'Oro



c1



c2



c3



○ 127   ✂ 00   ↗ 145

## Aquila



c1



c2



c3



○ 52   ✂ 21   ↗ 145



# Ginepro



c1



c2



c3



c4



○ 57    ✕ 16    └ 140

# Tuono



c1



c2



c3

○ 61    ✕ 12    └ 135







# Fango



○ 55   ✂ 20   ↗ 140

---



# Iberis



c1



c2



c3



○ 57    Ƶ 15    𠃊 140

# Ghiaccio



c1



c2



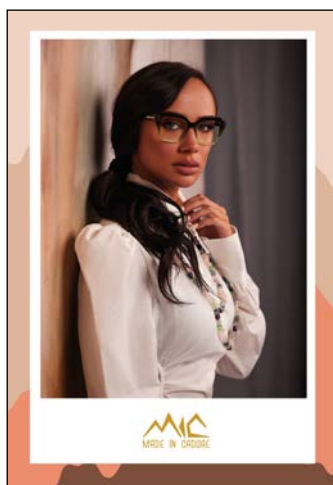
c3

○ 58    Ƶ 13    𠃊 135

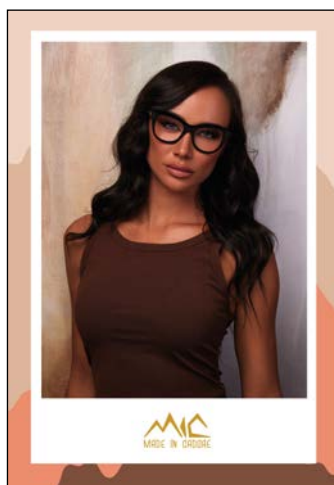




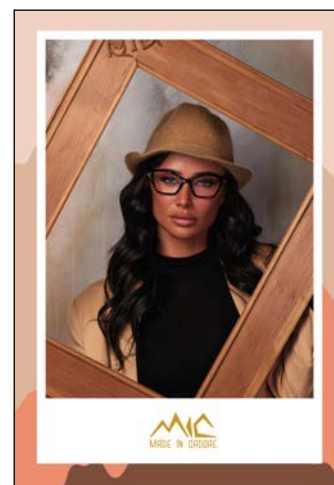
Cartelli vetrina - Window panels



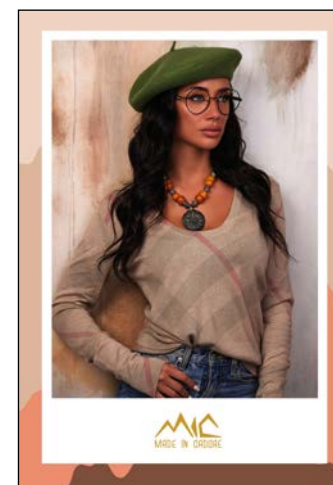
CVM\_165



CVM\_176



CVM\_169



CVM\_217



CVM\_153



CVM\_154



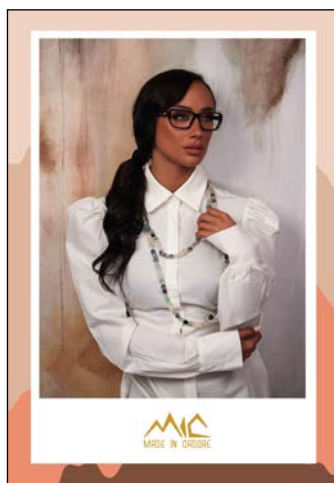
CVM\_156



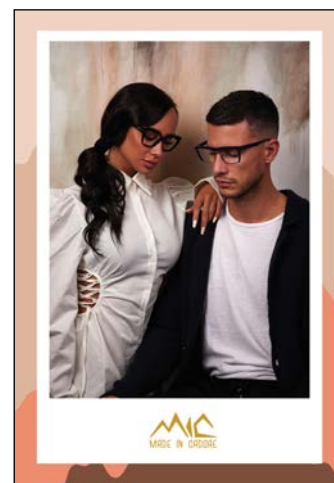
CVM\_102



CVM\_122



CVM\_172



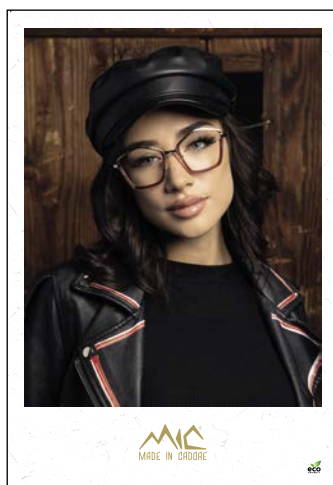
CVM\_211



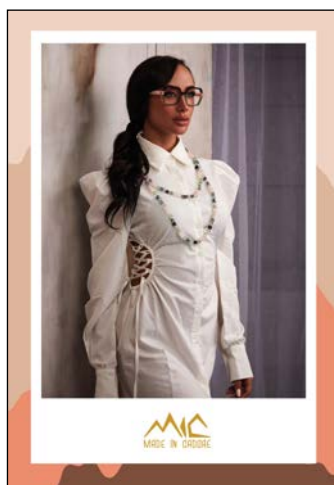
CVM\_132



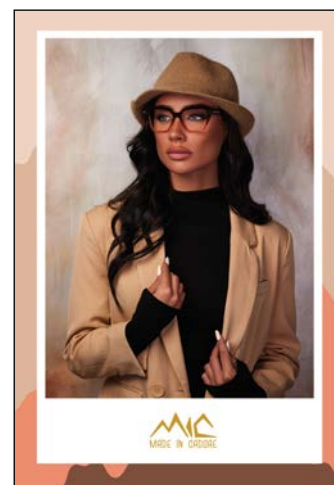
Cartelli vetrina - Window panels



CVM\_084



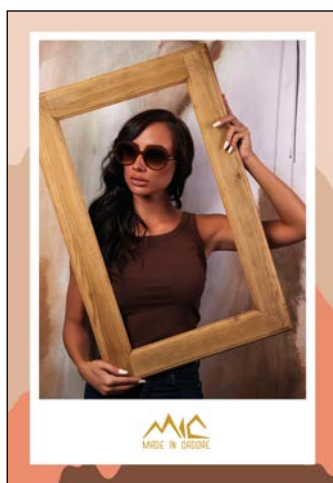
CVM\_179



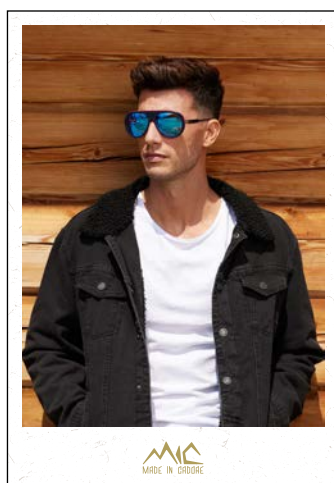
CVM\_168



CVM\_195



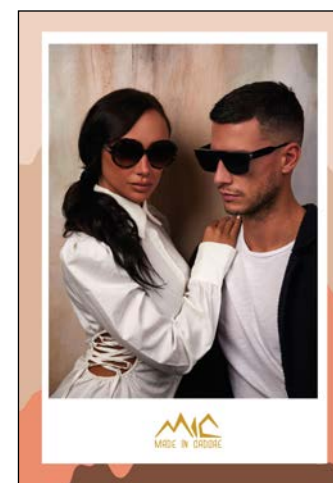
CVM\_186



CVM\_158



CVM\_206



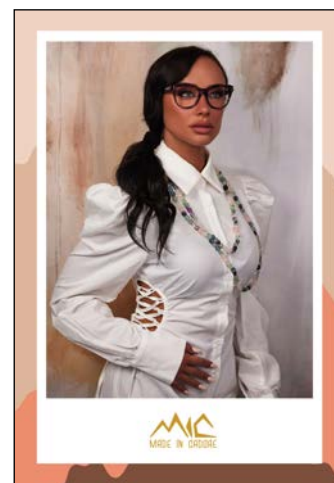
CVM\_212



CVM\_091



CVM\_094



CVM\_175



CVM\_107

Cartelli vetrina - Window panels



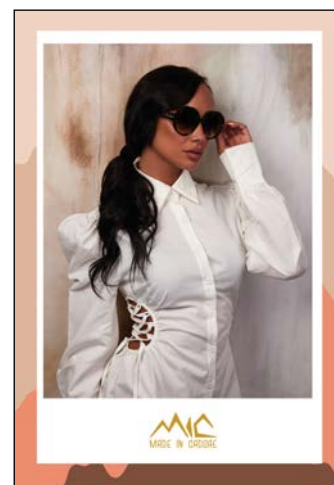
Cartelli vetrina - Window panels



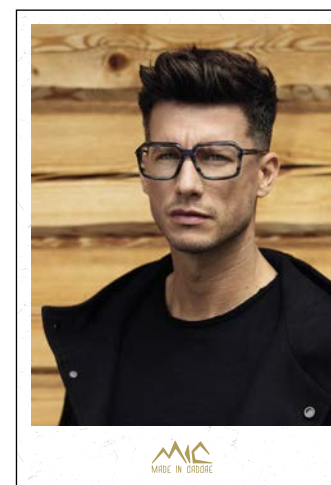
CVM\_161



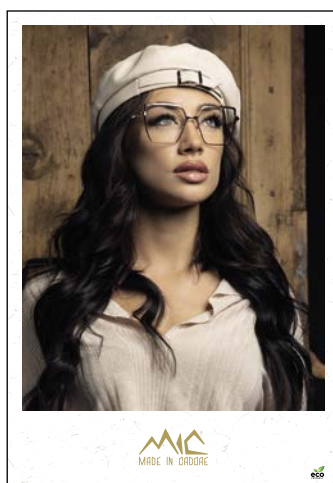
CVM\_200



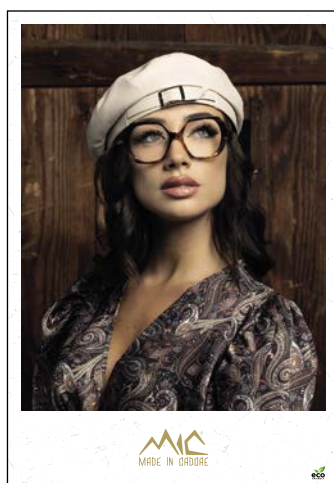
CVM\_187



CVM\_155



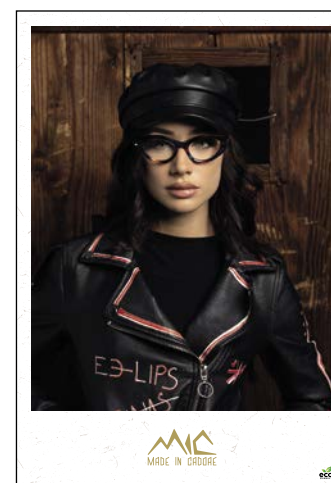
CVM\_098



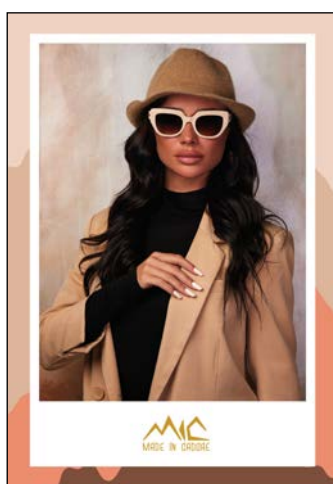
CVM\_093



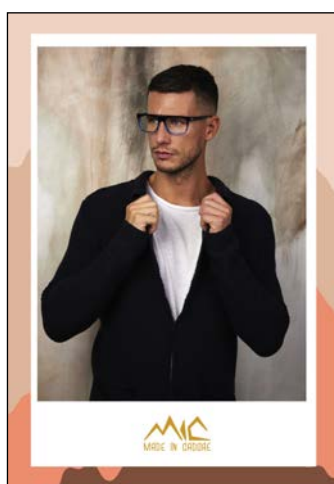
CVM\_079



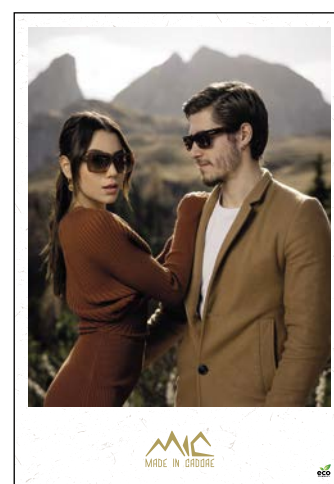
CVM\_105



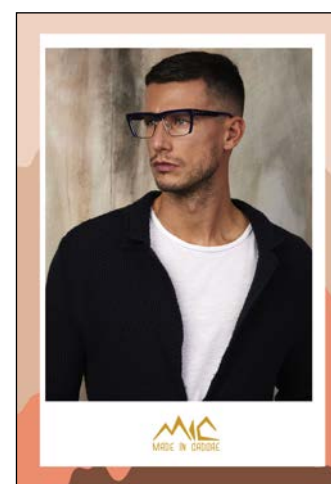
CVM\_183



CVM\_205



CVM\_133

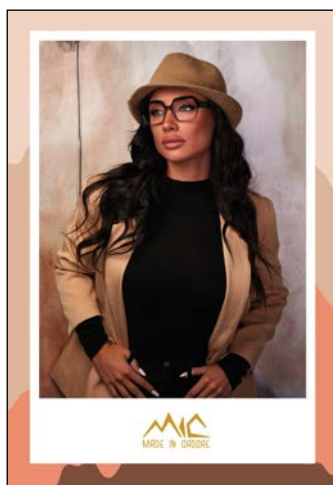


CVM\_208

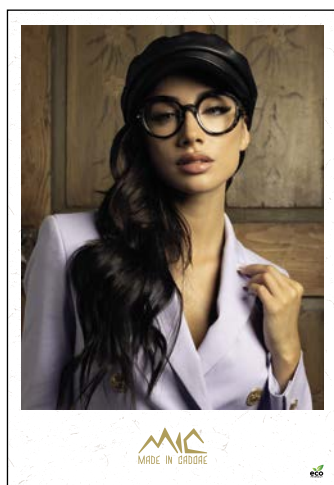
Cartelli vetrina - Window panels



Cartelli vetrina - Window panels



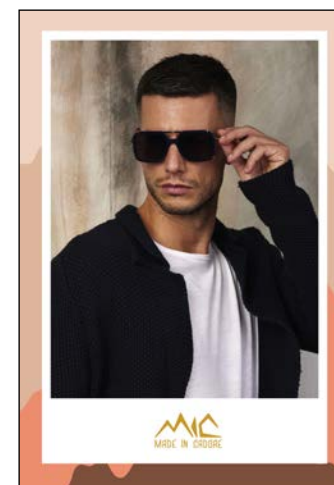
CVM\_177



CVM\_108



CVM\_135



CVM\_190



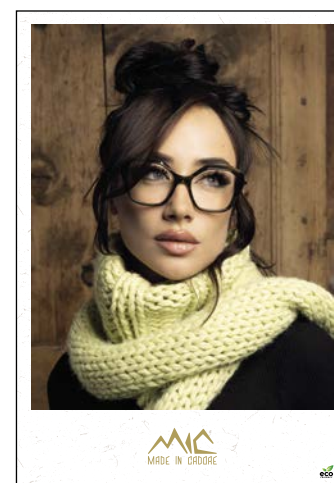
CVM\_157



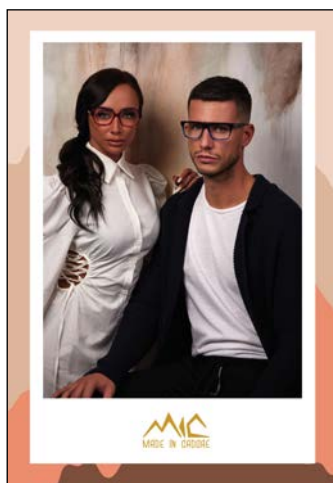
CVM\_065



CVM\_103



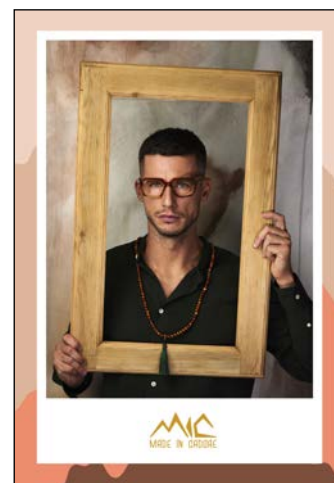
CVM\_100



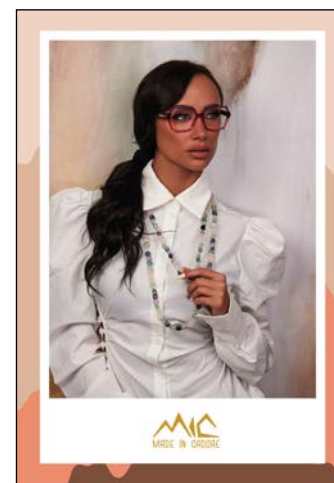
CVM\_209



CVM\_085



CVM\_201

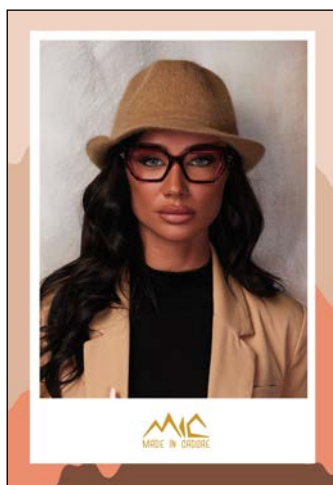


CVM\_180

Cartelli vetrina - Window panels



Cartelli vetrina - Window panels



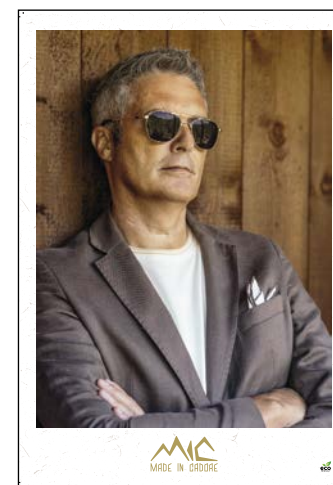
CVM\_182



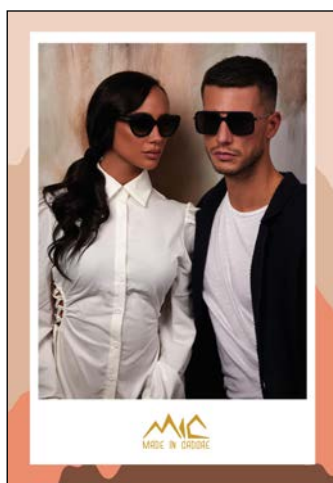
CVM\_088



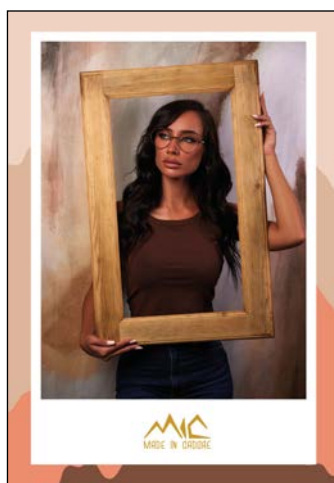
CVM\_074



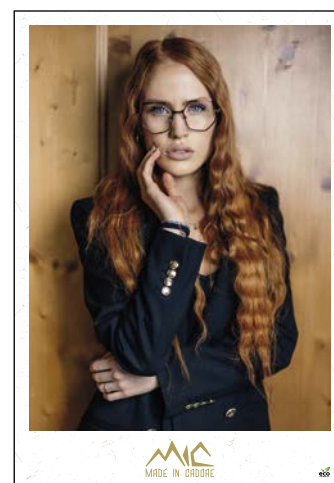
CVM\_067



CVM\_213



CVM\_218



CVM\_077



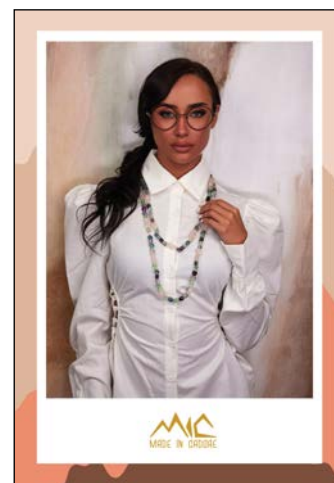
CVM\_066



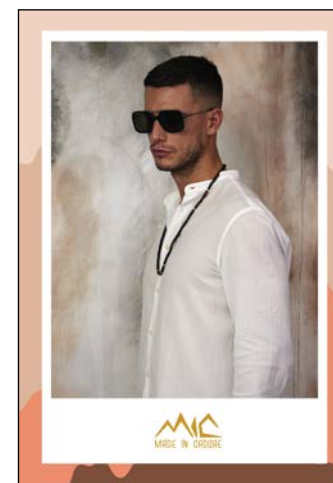
CVM\_083



CVM\_202



CVM\_214



CVM\_191

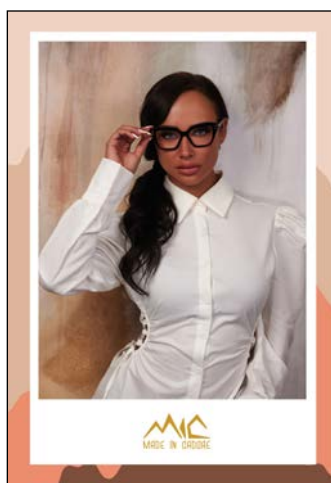
Cartelli vetrina - Window panels



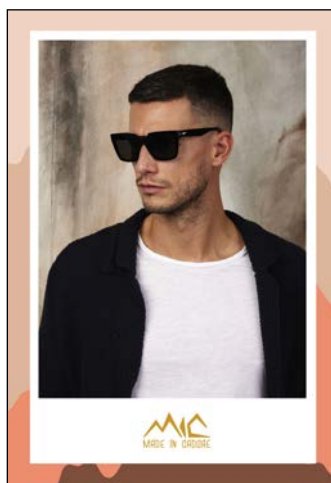
Cartelli vetrina - *Window panels*



CVM\_138



CVM\_167



CVM\_198

Espositore - *Display*



Astuccio - *Case*

Placchetta - *Logo display*







IMMAGINE 98

tel. +39 0435 501137  
info@immagine98.it  
www.mic-madeincadore.it



@madeincadore

micmadeincadore